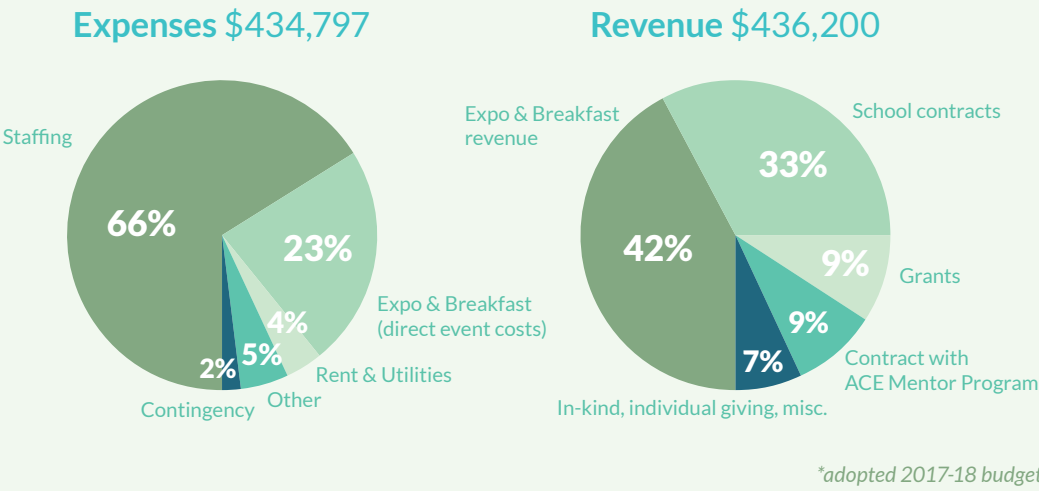


Our finances

The NW Youth Careers Expo is a leading source of PWA revenue and volunteers. Grants from foundations leverage more support. Contracts with individual school districts allow PWA to serve more students.



“The future we want is for YOU to have that education, to have those skills ... to qualify for those higher-wage jobs.”

Portland Mayor Ted Wheeler to students at the PWA Breakfast

Looking ahead

In 2017-18, we will continue three strategies to help more students graduate, find rewarding careers and contribute to the region's economic vitality.

- 1 Expand opportunities for all students, with extra outreach to higher-poverty, diverse high schools.**
- 2 Connect students with our region's high-value sectors, such as health care, design, energy, technology, manufacturing and construction.**
- 3 Create real-world career experiences that help students see the value of their classes.**

Get involved

Volunteer

to talk to a class or do mock interviews

Host

a career day, internship, or job shadow

Join

the Expo as an exhibitor or sponsor

Donate

to support career learning

Our board

Jane Williams, President

Multnomah County

Brooke Berglund,

President Elect

Port of Portland

Anna Yates, Vice President

Swift

Lori Mueller, Treasurer

Oregon Health Care Association

Gabrielle Riley, Secretary

ZGF Architects

Andre Goodlow

Parkrose High School

Bob Calwhite

Pacific NW Carpenters Institute

Carol Campbell

Grant High School

Chris Broderick

Portland State University

Craig Wilcox

Wells Fargo Advisors

Dan Malone

Roosevelt High School

Ebony Lawrence

Kaiser Permanente

Erik Weeman

Energy 350

Grace Andrews

Puppet

Janet Rodriguez

The Partners Group

Jon Hersen

Legacy Health

JR Gustafson

Nike (retired)

Lori Boullet

Columbia Sportswear

Madeline Kokes

Grant High School

Margaret Evans

Portland Parks & Recreation

Matt Hanson

Fortis Construction

Michael Willes

Tonkon Torp

Natalie Miller

Lee Hecht Harrison, PHRMA

Petra Callin

Madison High School

Samantha Jordan

Emerick Construction

Sandra Banister

Portland General Electric

Scott Kleiner

Wieden+Kennedy

Victoria Cross

Multnomah County

Antonio Crosier

Portland State University (student)

Kevin Jeans Gail

PWA Executive Director



PORTLAND WORKFORCE ALLIANCE

OUR WORK IN CAREER EDUCATION // 2017-18



The Portland Workforce Alliance builds enduring partnerships between businesses and Portland-area high schools.





PWA educates students about career opportunities to boost Oregon's graduation rate, develop a strong workforce and help young people find pathways to great jobs.

Our work

PWA works with schools, employers, colleges and other postsecondary partners to help students develop their **college-and-career aspirations**. Last year, we helped provide more than 10,700 career-learning experiences.

CAREERS EXPO

The annual NW Youth Careers Expo features top employers and draws students from Oregon and SW Washington. More than 6,000 students from 75+ high schools attended the last Expo, and our 170 exhibitors included colleges, apprenticeship training centers and about 100 of the **region's leading employers**. More than 700 students did mock interviews or career workshops.

CAREER DAYS & WORKSITE TOURS

We help host about 30 career days and worksite visits a year for hundreds of students at leading employers in health care, design, technology, construction and more. Volunteers show their workplaces, share their insights, offer hands-on activities and describe the **skills and education** needed to thrive in their careers.

MENTORSHIPS & INTERNSHIPS

We worked with our partners to provide about 250 students with mentorships or internships last year. The ACE Mentor Program focuses on careers in architecture, construction management and engineering. The Summer Construction Camp, PACE Mentorship Program and SPACE Summer Camp provide **in-depth opportunities** in the skilled trades. We also facilitated paid internships and job shadows in technology and design.

APPRENTICESHIPS

PWA supports the Youth Apprenticeship Training Program, a state-approved program that allows students under 18 to work alongside skilled craftspeople. Last year, students worked at PCC Structurals and Blount International.

CLASSROOM AND BEYOND

PWA assists career coordinators with on-campus activities, such as career exploration days, career fairs, and mock interviews. We connect teachers to employers for career speakers and classroom visits. We aim to show the connections between the classroom and **real life**.

"This makes me so excited for the future."

Claire McArthur, Alliance High School, after Wieden+Kennedy Career Day

Our work

10,700+
total career experiences



75+
high schools served



1,200+
employer volunteers

28

career days & worksite tours

250+
mentorship experiences

1,870+
mock interviews & career workshops

STUDENTS SURVEYED AT PWA CAREER DAYS SAID:

91%

gained insights that will help them in any career

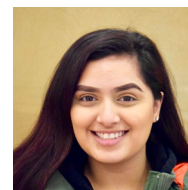
82%

would now consider working at the company that hosted the career day

100%

rated their career day Excellent or Good

**2016-17*



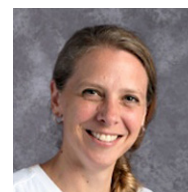
"It was such a great experience! It really opened my eyes on what steps I should take in my young adult life."

Cecelia Gallegos, Roosevelt High School



"You have to think about the long haul, where you want to be, who you want to hire down the road."

Tim Carpenter, Lease Crutcher Lewis



"Partnerships are so important and it means a great deal to staff and students."

Petra Callin, Madison High School Principal

Our partners

Employers and volunteers make our work possible. Thank you to:

Nike
ZGF Architects
Howard S. Wright
AWS Elemental
Mercy Corps
Microsoft
Wieden+Kennedy
Puppet
Metal Toad
Design Week Portland
CDK Global
Oregon Humane Society
Upswell
Port of Portland
Ziba Design
Instrument
OHSU
Portland Public Schools
Parkrose School District
Portland State University
Portland Community College
McKinstry
Portland Human Resources Management Association
Pacific Northwest Carpenters Institute
Gunderson
Kaiser Permanente NW
Providence Health & Services
Legacy Health
Portland General Electric
Wells Fargo
Hoffman Construction
PCC Swan Island Trades Center
Daimler
Portland Development Commission
Tri-County Consortium
Umpqua Bank
Multnomah County
Simple ...and many more!