

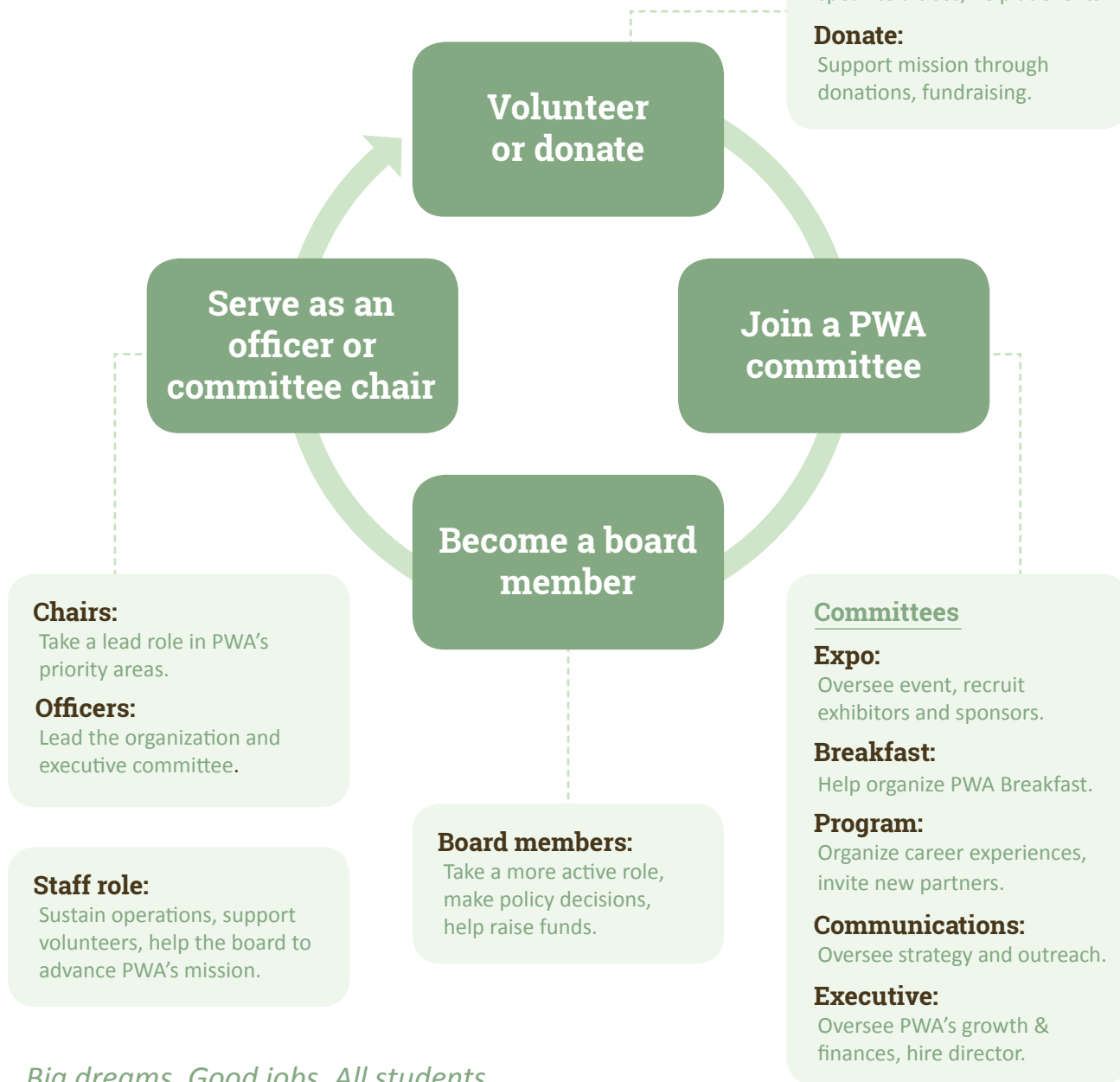


4 staff. 20 board members. Hundreds of volunteers.

Together, we do great things.

The nonprofit Portland Workforce Alliance relies on volunteers, donors and community supporters to provide 8,700+ career-learning experiences a year.

Will you join us?



Big dreams. Good jobs. All students.



PWA leadership for 2015-16: Our committees

Executive

Leadership:
President & president-elect.

Composition:
Elected officers and other board members

Responsibilities:
Oversees, steers and leads PWA, which involves strategy, structure, finances, board development & selection, public representation, **governance** and legal compliance.

Careers Expo

Leadership:
Co-chairs.

Composition:
Board and committee members.

Responsibilities:
Takes a leading role in recruiting exhibitors and sponsors to the Expo. Supports success of mock interviews and **overall event**. Leads outreach to new industries.

PWA Breakfast

Leadership:
Co-chairs.

Composition:
Board and committee members.

Responsibilities:
Takes a leading role in organizing the PWA Breakfast, including **program** and **donor opportunities**.

Program

Leadership:
Co-chairs.

Composition:
Board and committee members.

Responsibilities:
Takes a leading role in developing and improving **year-round career experiences** in the community & on campus. Manages relationships with education partners; facilitates experiences with industry partners.

Communications

Leadership:
Co-chairs.

Composition:
Board and committee members.

Responsibilities:
Oversees **communications strategy**, including PWA public relations, branding, community outreach, social media and materials.

Staff Leadership: Executive director.

Responsibilities: Reports to board, hires staff. Creates a structure that allows the board and staff to advance PWA's mission. Sustains operations through programs, partnerships, fundraising & communications.