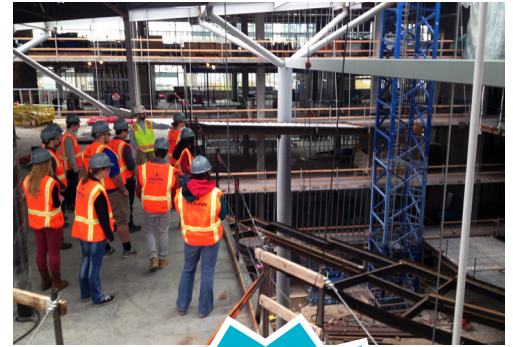


Interested in **ARCHITECTURE, CONSTRUCTION** or **ENGINEERING**?



# ACE MENTOR PROGRAM

**FREE**  
AFTER-SCHOOL  
PROGRAM!

Scholarship  
opportunities  
for seniors!

Design a building.

Learn valuable work skills.

Explore careers in architecture,  
construction and engineering.



ACE MENTOR PROGRAM  
ARCHITECTURE • CONSTRUCTION • ENGINEERING

Program runs:

**January–May 2018**

Applications due:

**November 21, 2017**

Student/family Info Sessions:

**Thurs, Oct. 12 & Tues, Nov. 7**

5:00–6:30 PM • attendance optional  
AIA Portland (403 NW 11th Avenue)

Learn more & apply at:

**[acementor.org/portland-or](http://acementor.org/portland-or)**

Questions? Talk to your school's career coordinator/counselor or email [kristen@portlandworkforcealliance.org](mailto:kristen@portlandworkforcealliance.org)



**ACE MENTOR PROGRAM**  
ARCHITECTURE • CONSTRUCTION • ENGINEERING

# 2017-18 ACE Mentor Program Calendar: Portland

For more info, visit [www.acementor.org/portland-or](http://www.acementor.org/portland-or). Questions? Contact [kristen@portlandworkforcealliance.org](mailto:kristen@portlandworkforcealliance.org)

| JUNE 2017 |                    |    |    |                       |                    |    |
|-----------|--------------------|----|----|-----------------------|--------------------|----|
| S         | M                  | T  | W  | Th                    | F                  | S  |
|           |                    |    |    | 1                     | 2                  | 3  |
| 4         | 5                  | 6  | 7  | 8                     | 9                  | 10 |
| 11        | 12                 | 13 | 14 | 15 <sup>END GRD</sup> | 16 <sup>PLAN</sup> | 17 |
| 18        | 19 <sup>PLAN</sup> | 20 | 21 | 22                    | 23                 | 24 |
| 25        | 26                 | 27 | 28 | 29                    | 30                 |    |

| JULY 2017 |    |    |    |    |    |    |
|-----------|----|----|----|----|----|----|
| S         | M  | T  | W  | Th | F  | S  |
|           |    |    |    |    |    | 1  |
| 2         | 3  | 4  | 5  | 6  | 7  | 8  |
| 9         | 10 | 11 | 12 | 13 | 14 | 15 |
| 16        | 17 | 18 | 19 | 20 | 21 | 22 |
| 23        | 24 | 25 | 26 | 27 | 28 | 29 |
| 30        | 31 |    |    |    |    |    |

| AUGUST 2017 |                          |                    |                        |    |                          |    |
|-------------|--------------------------|--------------------|------------------------|----|--------------------------|----|
| S           | M                        | T                  | W                      | Th | F                        | S  |
|             |                          | 1                  | 2                      | 3  | 4                        | 5  |
| 6           | 7                        | 8                  | 9 <sup>ACE board</sup> | 10 | 11                       | 12 |
| 13          | 14                       | 15                 | 16                     | 17 | 18                       | 19 |
| 20          | 21 <sup>NS/OP</sup>      | 22                 | 23                     | 24 | 25 <sup>PROF* PLAN</sup> | 26 |
| 27          | 28 <sup>PROF* PLAN</sup> | 29 <sup>PLAN</sup> | 30 <sup>START</sup>    | 31 |                          |    |

| SEPTEMBER 2017 |                                   |                      |    |    |    |    |
|----------------|-----------------------------------|----------------------|----|----|----|----|
| S              | M                                 | T                    | W  | Th | F  | S  |
|                |                                   |                      |    |    | 1  | 2  |
| 3              | 4                                 | 5 <sup>K START</sup> | 6  | 7  | 8  | 9  |
| 10             | 11                                | 12                   | 13 | 14 | 15 | 16 |
| 17             | 18 <sup>ACE golf tournament</sup> | 19                   | 20 | 21 | 22 | 23 |
| 24             | 25                                | 26                   | 27 | 28 | 29 | 30 |

| OCTOBER 2017            |    |    |    |                                    |                   |    |
|-------------------------|----|----|----|------------------------------------|-------------------|----|
| S                       | M  | T  | W  | Th                                 | F                 | S  |
| 1                       | 2  | 3  | 4  | 5                                  | 6                 | 7  |
| 8                       | 9  | 10 | 11 | 12 <sup>student info session</sup> | 13 <sup>INS</sup> | 14 |
| 15                      | 16 | 17 | 18 | 19                                 | 20                | 21 |
| 22                      | 23 | 24 | 25 | 26                                 | 27                | 28 |
| 29 <sup>dead week</sup> | 30 | 31 |    |                                    |                   |    |

| NOVEMBER 2017       |  |  |                                  |                               |                   |    |
|---------------------|--|--|----------------------------------|-------------------------------|-------------------|----|
| S                   | M                                      | T                                      | W                                | Th                            | F                 | S  |
| 1 <sup>finals</sup> |  |  | 1                                | 2 <sup>GRD Mentor Mixer</sup> | 3 <sup>PLAN</sup> | 4  |
| 5                   | 6                                      | 7 <sup>student info session</sup>      | 8 <sup>AM/PM/EVE ACE board</sup> | 9 <sup>AM/PM/EVE</sup>        | 10                | 11 |
| 12                  | 13                                     | 14                                     | 15                               | 16                            | 17                | 18 |
| 19                  | 20 <sup>mentor confirmations due</sup> | 21 <sup>student applications due</sup> | 22                               | 23                            | 24                | 25 |
| 26                  | 27                                     | 28                                     | 29                               | 30                            |                   |    |

| DECEMBER 2017              |  |    |    |   |    |    |
|----------------------------|--|----|----|---|----|----|
| S                          | M  | T  | W  | Th                                      | F  | S  |
|                            |  |    |    |   | 1  | 2  |
| 3                          | 4  | 5  | 6  | 7 <sup>Mentor Captain orientation</sup> | 8  | 9  |
| 10                         | 11 <sup>accepted students notified</sup> | 12 | 13 | 14                                      | 15 | 16 |
| 17 <sup>winter break</sup> | 18                                       | 19 | 20 | 21                                      | 22 | 23 |
| 24                         | 25                                       | 26 | 27 | 28                                      | 29 | 30 |
| 31                         |  |    |    |   |    |    |

| JANUARY 2018            |                    |                      |    |                                  |                   |    |
|-------------------------|--------------------|----------------------|----|----------------------------------|-------------------|----|
| S                       | M                  | T                    | W  | Th                               | F                 | S  |
|                         |                    |                      | 1  | 2                                | 3                 | 4  |
| 7                       | 8                  | 9 <sup>Week 1</sup>  | 10 | 11 <sup>Mentor orientation</sup> | 12                | 13 |
| 14 <sup>dead week</sup> | 15                 | 16 <sup>Week 2</sup> | 17 | 18                               | 19                | 20 |
| 21 <sup>finals</sup>    | 22                 | 23                   | 24 | 25                               | 26 <sup>GRD</sup> | 27 |
| 28                      | 29 <sup>PLAN</sup> | 30 <sup>Week 3</sup> | 31 |                                  |                   |    |

| FEBRUARY 2018 |    |                      |                        |    |    |    |
|---------------|----|----------------------|------------------------|----|----|----|
| S             | M  | T                    | W                      | Th | F  | S  |
|               |    |                      |                        | 1  | 2  | 3  |
| 4             | 5  | 6 <sup>Week 4</sup>  | 7 <sup>ACE board</sup> | 8  | 9  | 10 |
| 11            | 12 | 13                   | 14                     | 15 | 16 | 17 |
| 18            | 19 | 20 <sup>Week 5</sup> | 21                     | 22 | 23 | 24 |
| 25            | 26 | 27                   | 28                     |    |    |    |

| MARCH 2018                 |    |                       |    |    |    |    |
|----------------------------|----|-----------------------|----|----|----|----|
| S                          | M  | T                     | W  | Th | F  | S  |
|                            |    |                       |    | 1  | 2  | 3  |
| 4                          | 5  | 6 <sup>Mid-term</sup> | 7  | 8  | 9  | 10 |
| 11                         | 12 | 13                    | 14 | 15 | 16 | 17 |
| 18                         | 19 | 20 <sup>Week 7</sup>  | 21 | 22 | 23 | 24 |
| 25 <sup>spring break</sup> | 26 | 27                    | 28 | 29 | 30 | 31 |

| APRIL 2018          |    |                       |    |                            |                    |    |
|---------------------|----|-----------------------|----|----------------------------|--------------------|----|
| S                   | M  | T                     | W  | Th                         | F                  | S  |
| 1                   | 2  | 3 <sup>Week 8</sup>   | 4  | 5                          | 6                  | 7  |
| 8 <sup>finals</sup> | 9  | 10 <sup>Week 9</sup>  | 11 | 12 <sup>GRD</sup>          | 13 <sup>PLAN</sup> | 14 |
| 15                  | 16 | 17                    | 18 | 19 <sup>ACE Luncheon</sup> | 20                 | 21 |
| 22                  | 23 | 24 <sup>Week 10</sup> | 25 | 26                         | 27                 | 28 |
| 29                  | 30 |                       |    |                            |                    |    |

| MAY 2018 |    |                      |    |    |    |    |
|----------|----|----------------------|----|----|----|----|
| S        | M  | T                    | W  | Th | F  | S  |
|          |    |                      |    | 1  | 2  | 3  |
| 4        | 5  | 6 <sup>Week 11</sup> | 7  | 8  | 9  | 10 |
| 11       | 12 | 13                   | 14 | 15 | 16 | 17 |
| 18       | 19 | 20 <sup>Finale</sup> | 21 | 22 | 23 | 24 |
| 25       | 26 | 27                   | 28 | 29 | 30 | 31 |

| JUNE 2018           |                    |                    |    |    |                      |    |
|---------------------|--------------------|--------------------|----|----|----------------------|----|
| S                   | M                  | T                  | W  | Th | F                    | S  |
|                     |                    |                    |    |    | 1                    | 2  |
| 3 <sup>finals</sup> | 4                  | 5                  | 6  | 7  | 8 <sup>END GRD</sup> | 9  |
| 10                  | 11 <sup>PLAN</sup> | 12 <sup>PLAN</sup> | 13 | 14 | 15                   | 16 |
| 17                  | 18                 | 19                 | 20 | 21 | 22                   | 23 |
| 24                  | 25                 | 26                 | 27 | 28 | 29                   | 30 |

| JULY 2018 |    |    |    |    |    |    |
|-----------|----|----|----|----|----|----|
| S         | M  | T  | W  | Th | F  | S  |
| 1         | 2  | 3  | 4  | 5  | 6  | 7  |
| 8         | 9  | 10 | 11 | 12 | 13 | 14 |
| 15        | 16 | 17 | 18 | 19 | 20 | 21 |
| 22        | 23 | 24 | 25 | 26 | 27 | 28 |
| 29        | 30 | 31 |    |    |    |    |

\*In the event of inclement weather, ACE will refer to Portland Public Schools' closures.

## FUNDRAISING EVENTS

**Golf Tournament:** September 18

**Luncheon:** April 19

## ACE BOARD

**ACE Board Meetings:** 8/9, 11/8, 2/7, 5/9

**ACE booth at PWA Expo:** March 13

## PROGRAM

**Meetings are from 4:30-6:30 PM**

**Program starts:** January 9 & 11

**Mid-term reviews:** March 6 & 8

**Final presentations:** May 15 & 17, 6:00-8:00 PM

## STUDENTS

**Student/family info sessions:** Oct. 12 & Nov. 7

**Student applications due:** Nov. 21 at 5:00 PM

**Accepted students notified:** December 11

## MENTORS

**Mentor Mixer:** November 2

**Mentor confirmations due:** November 21

**Captains orientation:** December 6 or 7

**Mentors orientation:** January 3 or 4

**Mentor appreciation night:** May 23 or 24

Tuesday teams   Mentors only   ALL

Thursday teams   ACE board